

FENTON

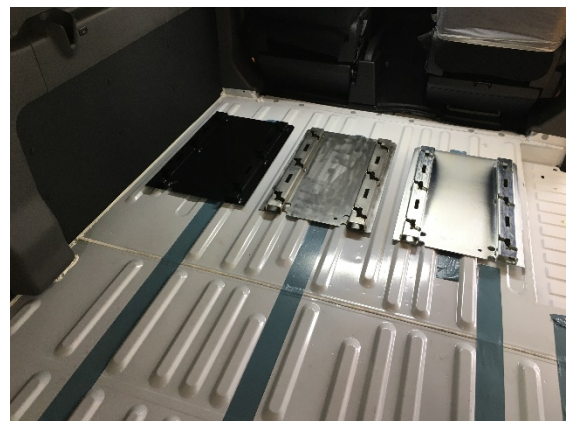
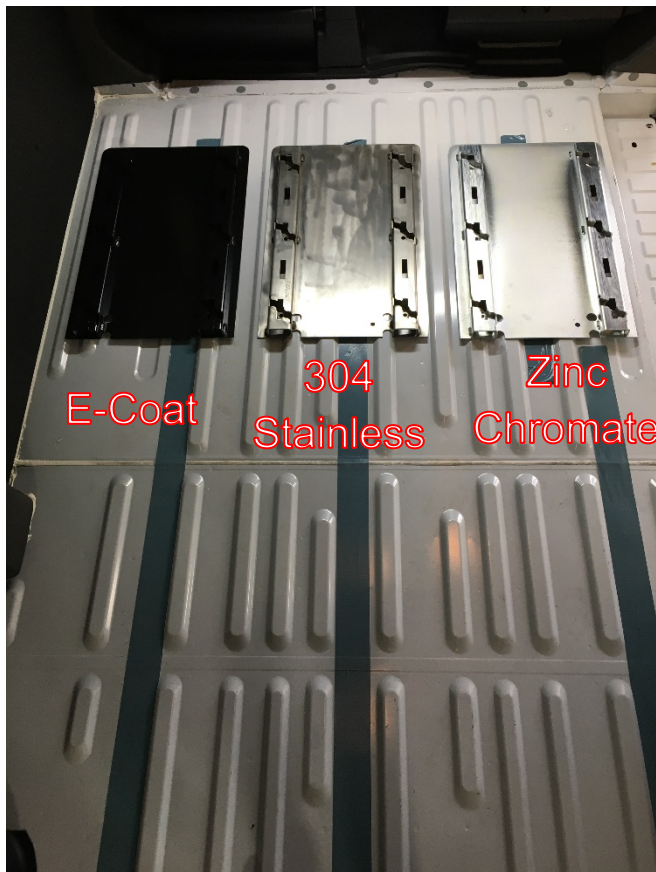
InnovateElevate

26 Center St. Randolph NY, 14772



Universal Seat Base Floor Pod Installation

For use with Fenton's CAMLock, CAMLock 2, & Step-N-Lock Systems



Professional Installation with proper training is recommended. It is up to the installer to check for under floor obstructions (i.e. fuel tanks, fuel lines, brake lines, modules, wiring and etc.) or any other item that can be damaged by the installation of the flooring system. Clearances are the responsibility of the installer.

CAUTION

Drill *ONLY* at indicated locations. Use of a stop collar on drill bits is strongly recommended.

Lower or remove the fuel tank before beginning installation if the pod is to be installed anywhere in the vicinity of the tank.

DANGER – NO UNPROTECTED BOLTS SHOULD POINT IN THE DIRECTION OF ANY PART OF THE FUEL SYSTEM. THE ENDS OF THESE BOLTS MUST BE PERMANENTLY CAPPED OR SHIELDED IN SOME MANNER TO AVOID PUNCTURING THE FUEL SYSTEM IN THE EVENT OF AN ACCIDENT.

If necessary, lower or remove the spare tire before beginning installation.

Use all hardware supplied with kit.

Use only hardware supplied with kit (If a longer bolt is needed, use *ONLY* 3/8"-16 Thread Diameter, Grade 8, zinc-plated bolts).

Do not over tighten hardware (maximum 30 ft-lb).

Do not under tighten hardware.

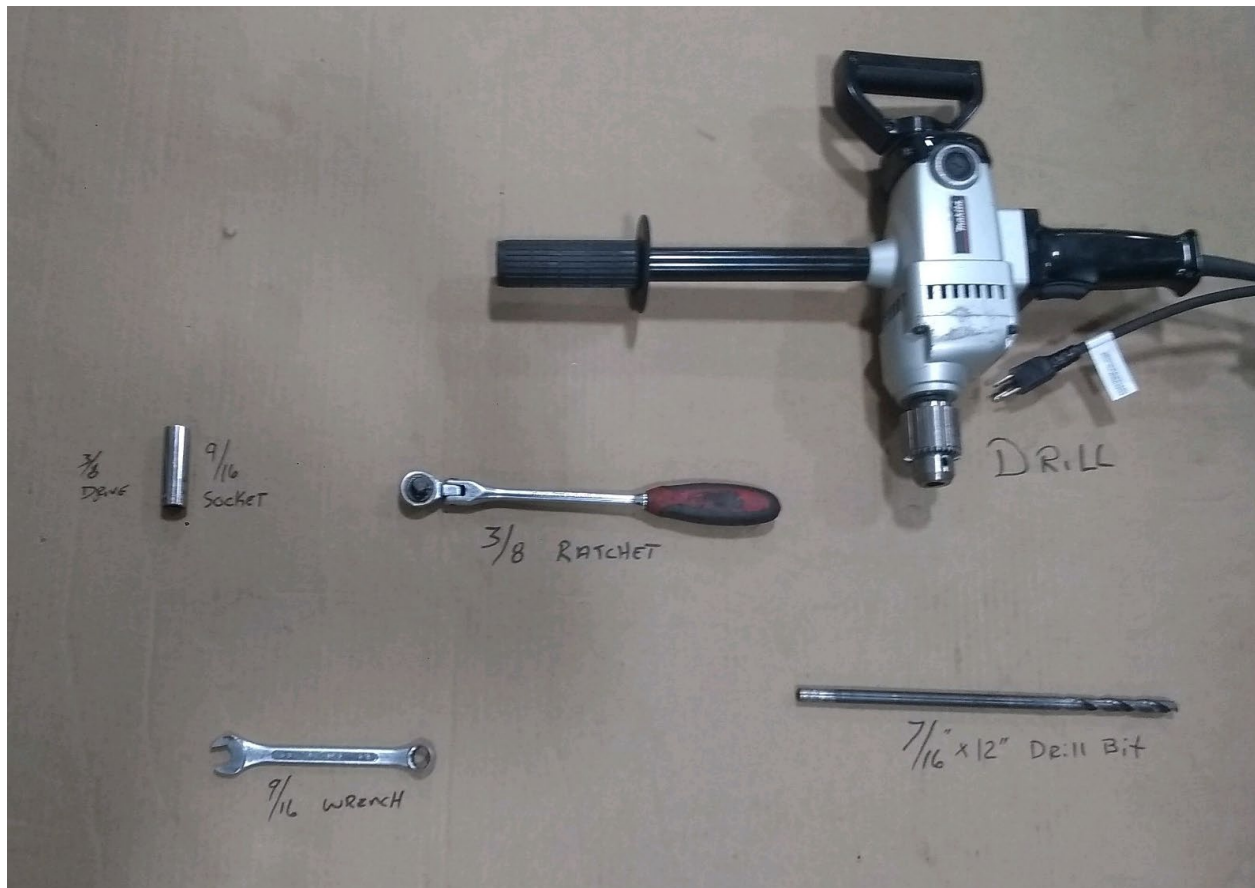
Use rust inhibiting treatments on all raw edges.

Thoroughly seal all holes to prevent moisture, dust and fume infiltration.

OEM or custom floor should be cut to fit around the pod. The seat pod must *NOT* be installed over carpet, padding, or any other flexible flooring material. It must be placed flat against solid, structural flooring surface. This seat pod is designed to be bolted in only and *NOT* to be welded or fastened in any other manner.

Tools List

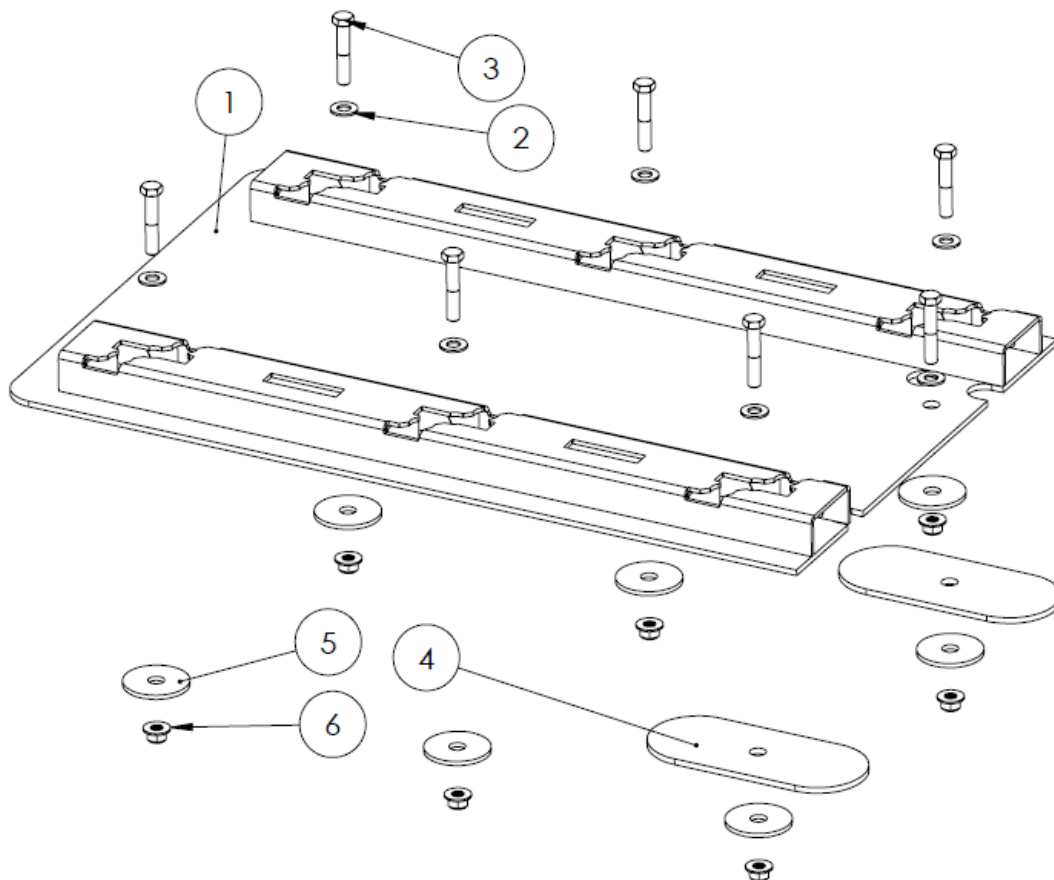
- Drill
- Stop collar
- 7/16" x 12" drill bit
- Small-diameter drill bit
- Ratchet
- 9/16" socket
- 9/16" wrench
- 3/8" Impact & torque stick



Introduction

The AbiliTrax Universal Floor Pod is a highly flexible bolt-in rail system that introduces AbiliTrax seat base compatibility to your vehicle. The pod installation has been safety tested at the weakest point on the chassis floor, giving you the freedom to select the location that works best for your application.

ITEM NO.	PART NUMBER	DESCRIPTION	QTY.
1	SPWWF02Z	Seat Pod Weldment	1
2	FW03750628	Flat Washer, 3/8"	7
3	HH37162008	Hex Head Bolt, 3/8-16 x 2" Gr 8	7
4	SPPF03Z	Base Pod Backer Plate	2
5	FWB370012	FLAT WASHER 2" OD	7
6	FN3716TLK8	3/8"-16 Flange Nut Top Lock GR8	7





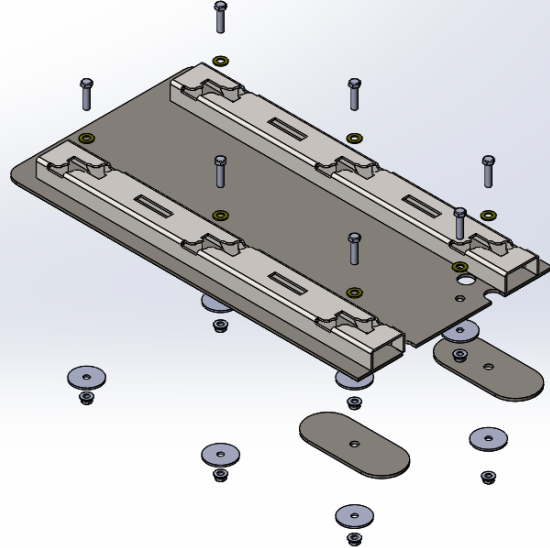
InnovateElevate

26 Center St. Randolph NY, 14772

Installation Instructions

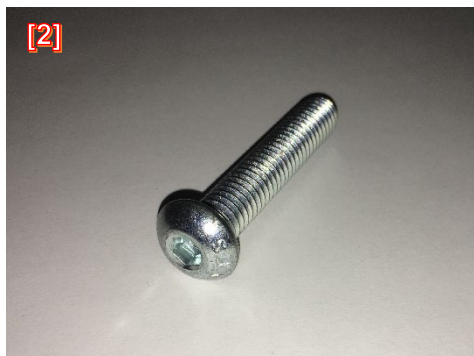
Place the Pod plate on vehicle floor at desired location. **Face** the 2 rounded corners on the large plate to the front of the vehicle. Carefully **measure** to determine if there are any hazards or obstructions under the floor that must be avoided or temporarily moved. If you intend to install anywhere near the gas tank, spare tire or AC lines, the tank and

[1]



lines should be **lowered** as a precaution, even if cleared by measurements. When installing over the gas tank, replace Item #3—Hex Head Bolt, 3/8-16 x 2” Grade 8 Zinc finish—with the button-head equivalent [2] (ex. Fastenal part number 94096) and install the bolts upside down and tighten the nuts from inside the vehicle.

[2]

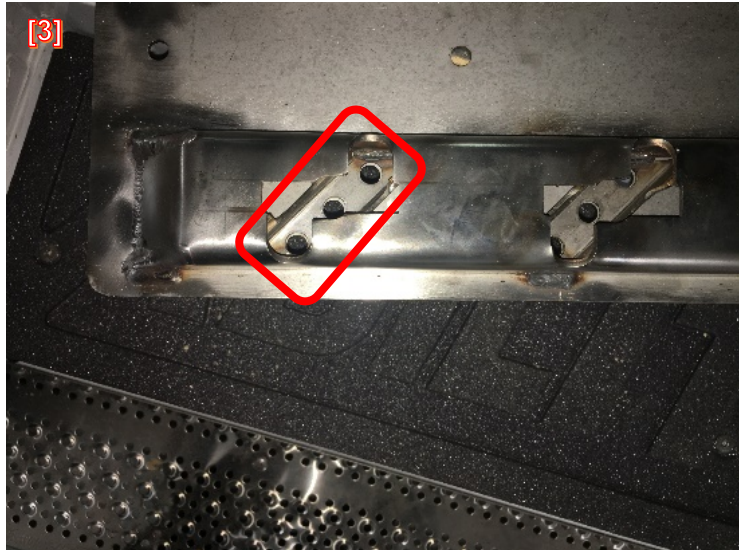


Alter the location of the floor pod to avoid under-floor hazards or obstructions. It will be necessary to drill seven (7) holes through the vehicle floor, so all 7 bolts must be used and all 7 drill locations must be clear.

NOTE — Each bolt hole includes two optional off-set locations that may be used to help with clearance.

Bolting through crossmembers and thicker/overlapping areas is acceptable and can even add more strength to the system. If attaching to a vehicle with “body on frame” construction (e.g. most trucks, pick-up trucks, some full-size vans), **DO NOT** attach to the actual frame structure of the vehicle. **Install** the 2 large, oval-shaped steel plates and the large 2”-diameter flat washers under the floor at the rear-most corners of the pod. **Use** the 2”-diameter flat washers at all 5 of the remaining bolt locations. If necessary, **trim** the washers and plates slightly so that they are set flat against the underside of the floor.

Use a small-diameter “pilot” drill to carefully **drill** through the center of the mounting hole locations. **Note** that each track has 2 extra holes to help with safe placement **[3]**. If the extra mounting hole (the one located outside the



tracks) is not in a good location, **drill** a new hole. A second person under the vehicle as a “spotter” is recommended. **Check** the holes and **verify** all of the conditions previously described have been satisfied. **Re-drill** the holes with a 7/16” x 12” drill bit; **use** the stop-collar on the minimum depth and extend as needed. **Clean** all metal filings and other debris. **Treat** all holes and raw metal edges with rust inhibiting finish, including un-used pilot holes. **Place** a bead of automotive-type sealant around each hole. **Place** seat pod back into position.



InnovateElevate

26 Center St. Randolph NY, 14772

Insert all bolts and 3/8” flat washers down through from the top side. Install all 2”-diameter flat washers, plates and nuts from the underside **[1]**. Torque all nuts to a maximum of 30 ft-lb.

If OEM floor or cross-member structures begin to deform or crush, **STOP** tightening. **DO NOT** over-tighten. The nuts used in this kit are of a “top lock” variety and cannot “self-loosen” as long as some bolt threads are protruding completely through the nut.