



TECHNICAL SERVICE BULLETIN

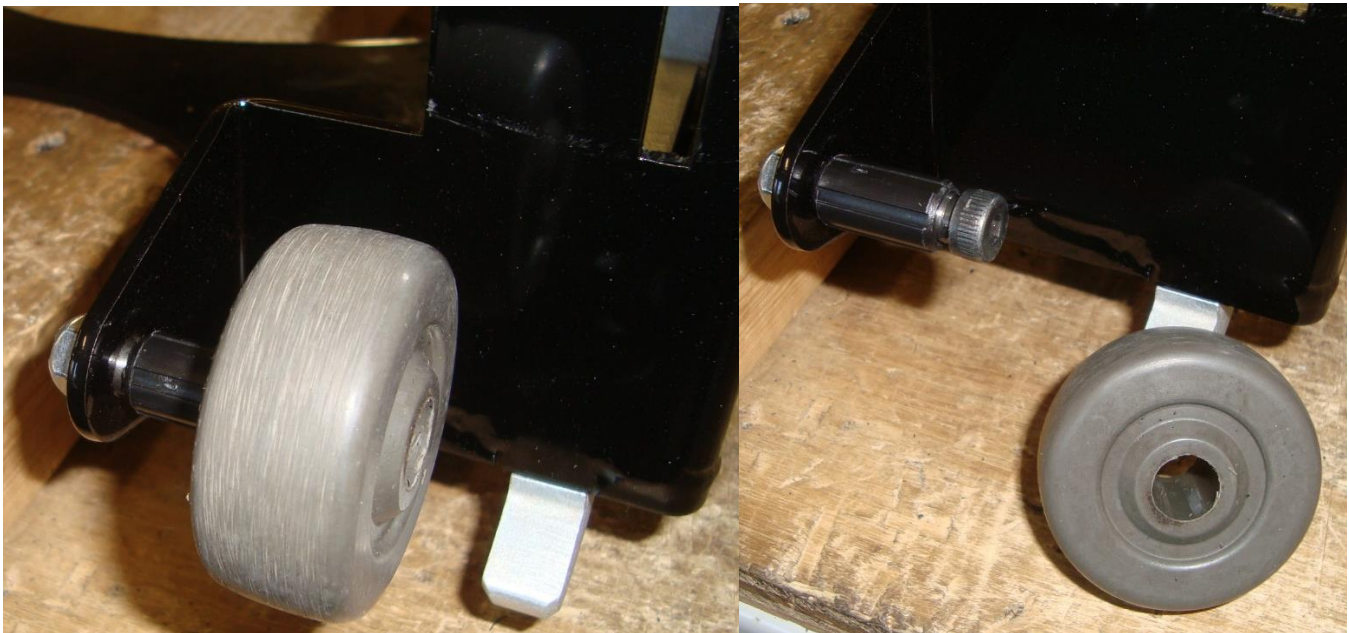
Technical Service Bulletin Number- TSB0001

Date- 4/18/2018

Item, Unit or Assembly Affected- Step-N-Lock Seat Base Assemblies (Roller Wheels)

Serial Number(s) Affected- SA1535 thru SA2097 (or any Seat Base with a 2" O.D. Gray Roller Wheels)

Reason for Bulletin- Due to an upgrade in the Roller Wheels in which the style and diameter of the roller wheel was changed from a 2-1/2" OD Black wheel to a 2" OD Gray wheel, it is possible that, under certain conditions, a tube in the center bore of the wheel may pull out of the wheel and allow the wheel to slip past the head of the shoulder bolt (axle) on which it rotates. This may allow the roller wheel to come completely off the seat base. This would then make it impossible to roll the base as intended.





Action Required- Using a 5/32" Hex Socket Bit (or Allen wrench) and a 7/16" wrench, remove the shoulder bolt (axle) and nut. Remove the dislodged sleeve from the Shoulder Bolt and press back into the roller wheel. Re-install in reverse order BUT add / install a Thin (.040" thk. or less) 5/16" Flat Washer under the head of the Shoulder Bolt. This will retain the wheel and prevent future dislodgement. Do not over-tighten or use too thick a washer as this may bind the wheel. Check the wheel for free rolling after tightening. The recommended washer is a Fenton Mobility Part Number FW317504SS or a *Fastenal* Part Number 71015 (or Equivalent .750"OD x .340"ID x .040" Thk. Stainless Steel). Washers may be ordered free of charge directly from AbiliTrax and Labor reimbursement claims may also be made by contacting mary@abilitrax.com. Labor allowance will be at a rate .25 hrs @ \$90.00 per hour (\$22.50 per seat).



Safety Issue? NO- Although this is an inconvenience when attempting to move a seat, it is not considered a safety issue and seats are functionally safe for continued use.