



Dodge Promaster

Running Board Instructions.





## Table of contents

- Recommended Tools
- Preassembly
- Installation



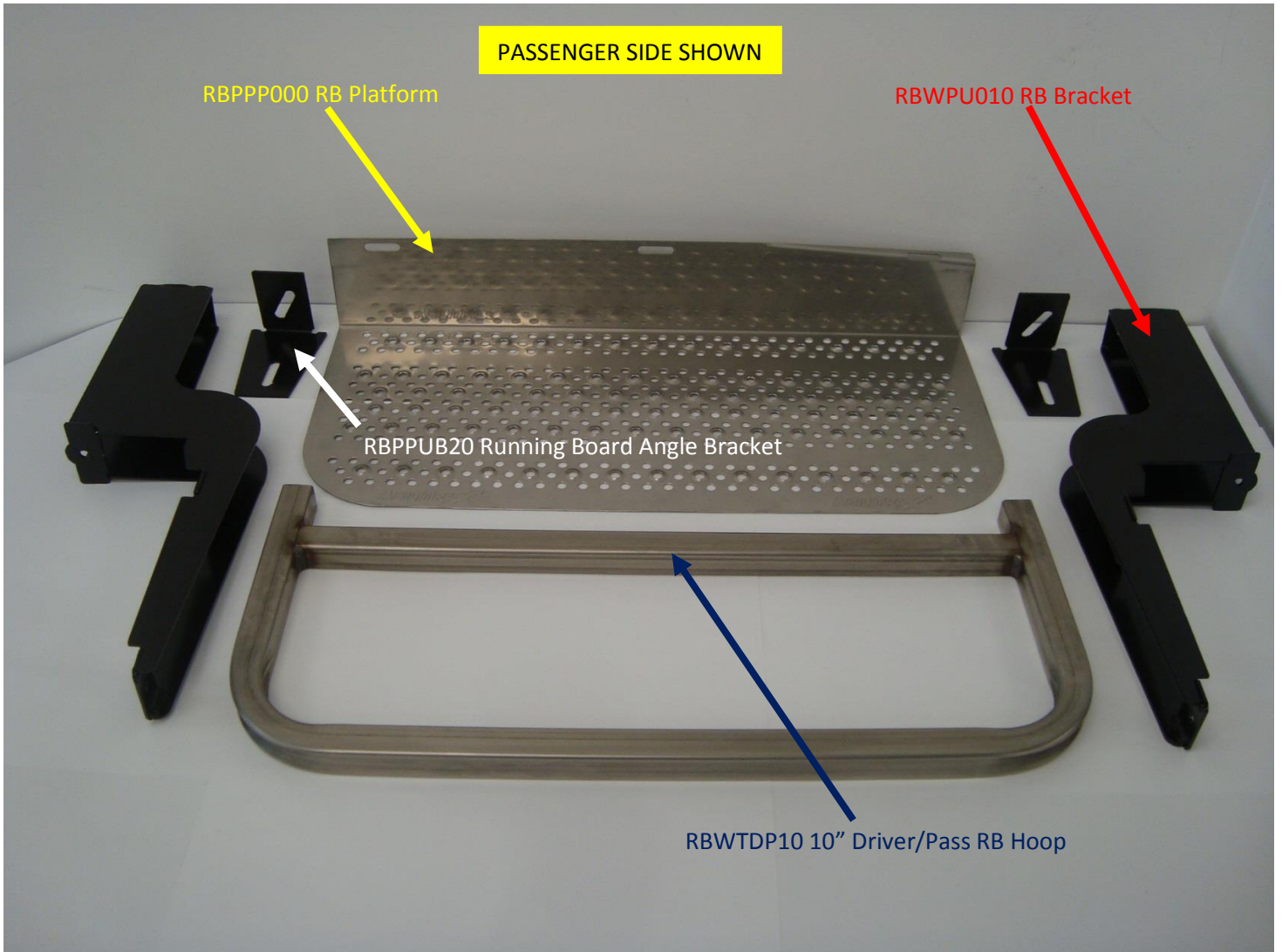
## Recommended Tools List

- Impact Driver (3/8" drive)
- 3/8" Drive Sockets
- Box End Wrenches
- Drill
- 3/16", 5/16", 17/32" and 9/16" Drill Bits
- Rivet Gun
- 3/16" Rivets
- Tape Measure
- Additional tools not listed may be of assistance during the installation process.



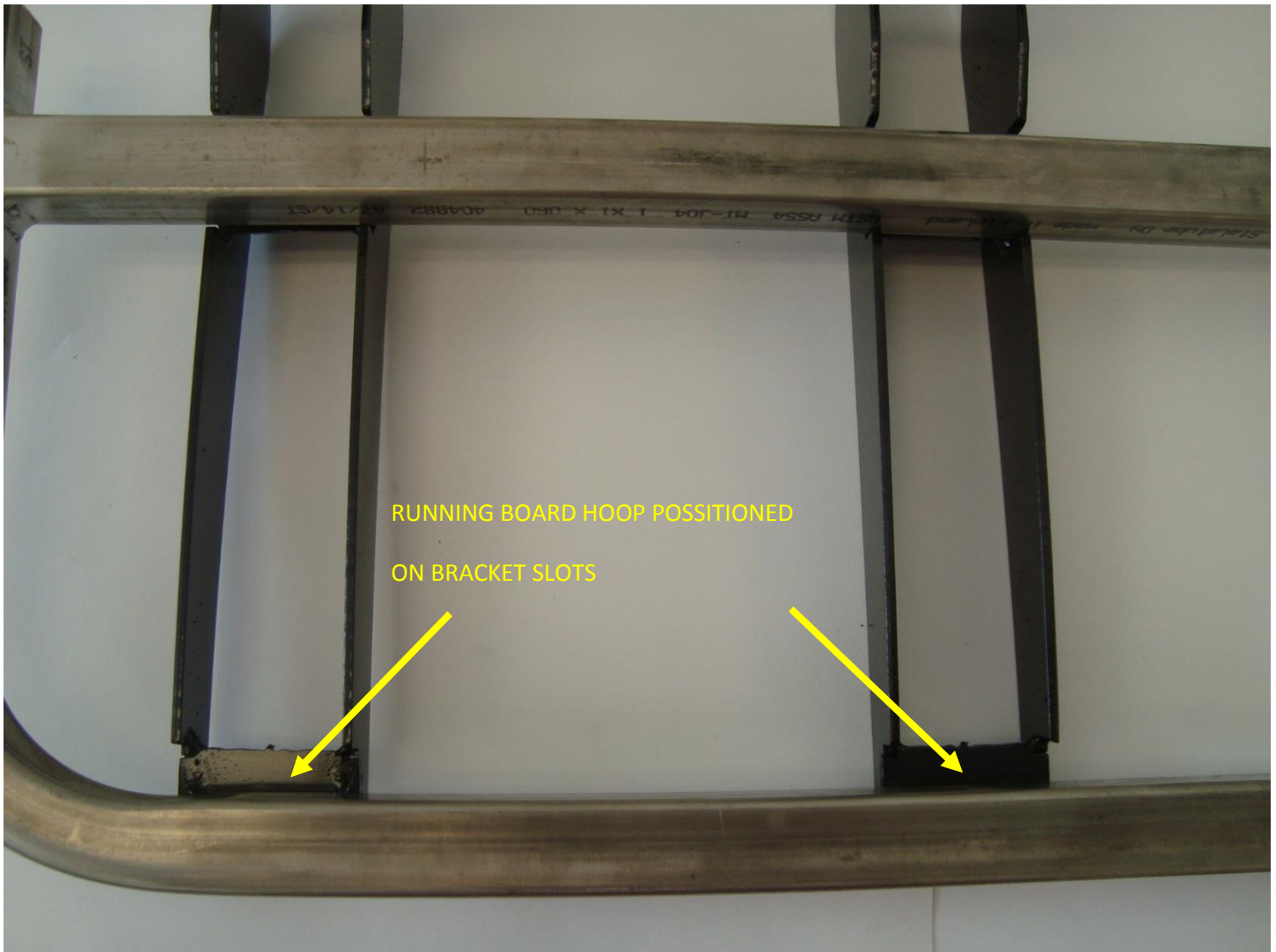
## Preassembly

First preassemble all running boards on a bench starting with the Passenger door.



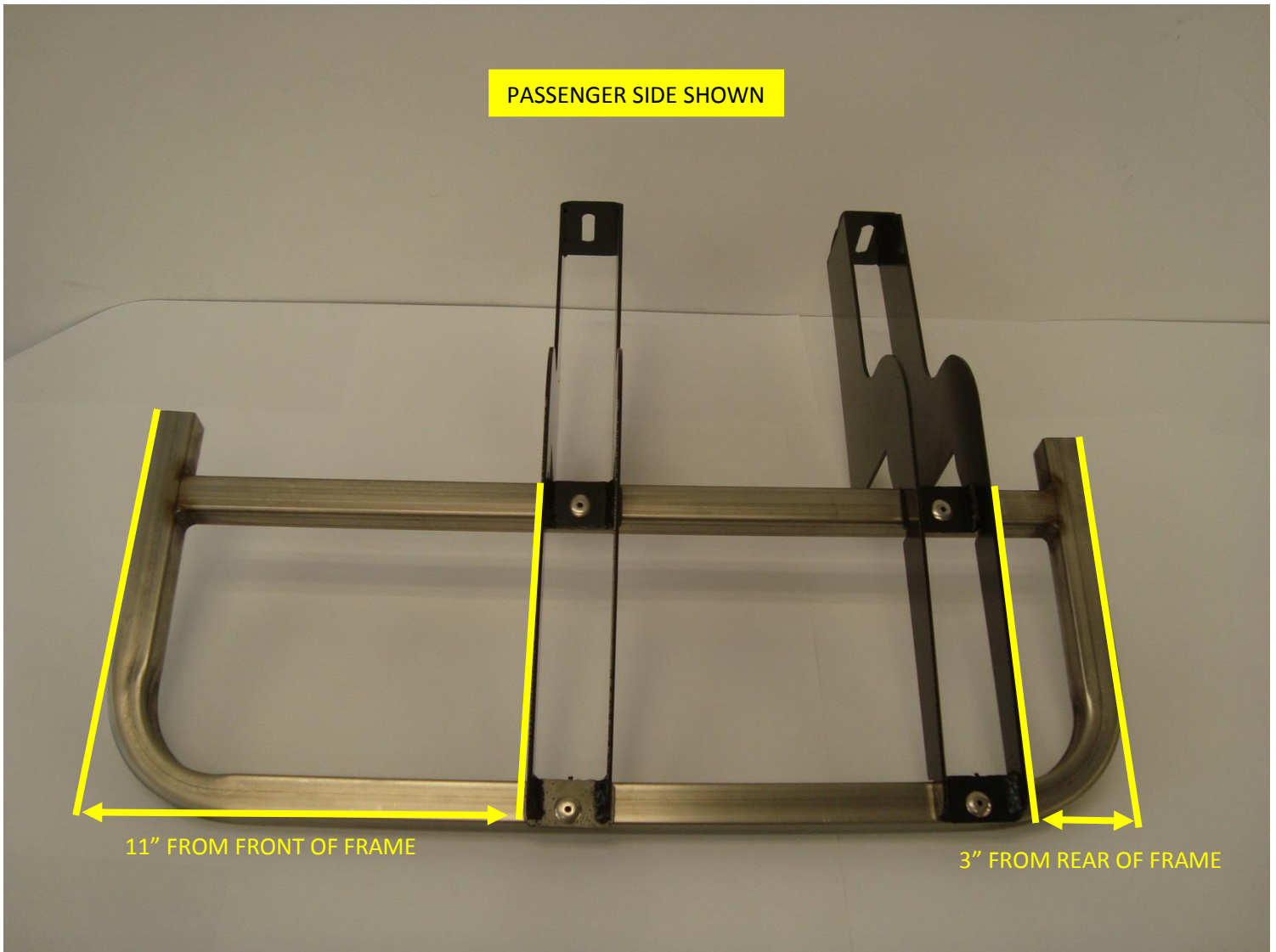


**NOTE** – To make the Running Board Platform installation easier the Running Board Hoop can be positioned slightly outward in the Bracket tabs.





The forward Bracket is located 11" Inches from the Running Board Platform while the rear is 3" Inches as shown below. The Driver side is a mirror of the Passenger side.



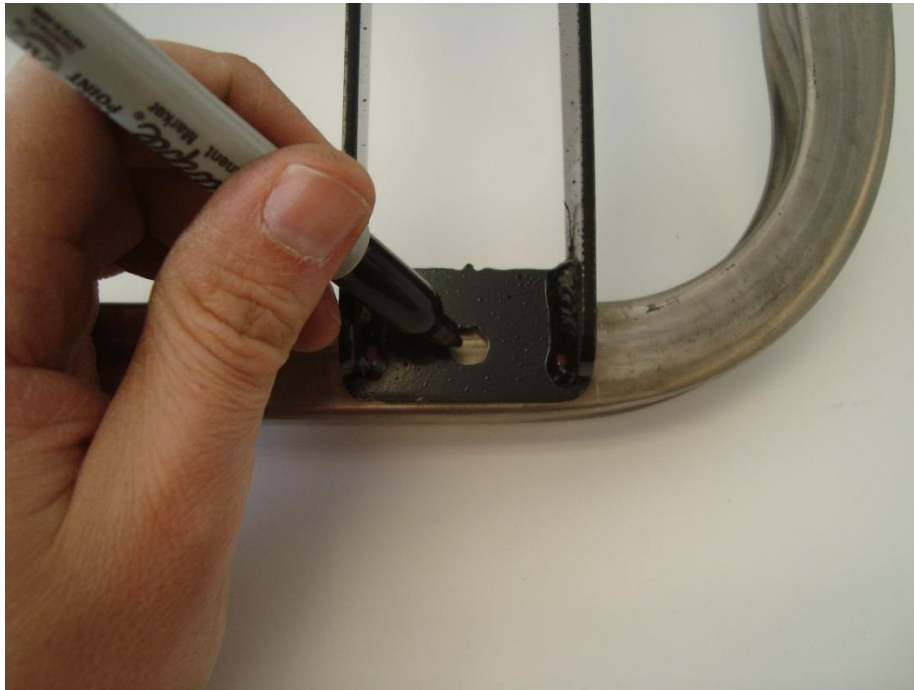


Cargo door locations are 9 ½" inches and 12 ¾" from the Running Board Hoop.





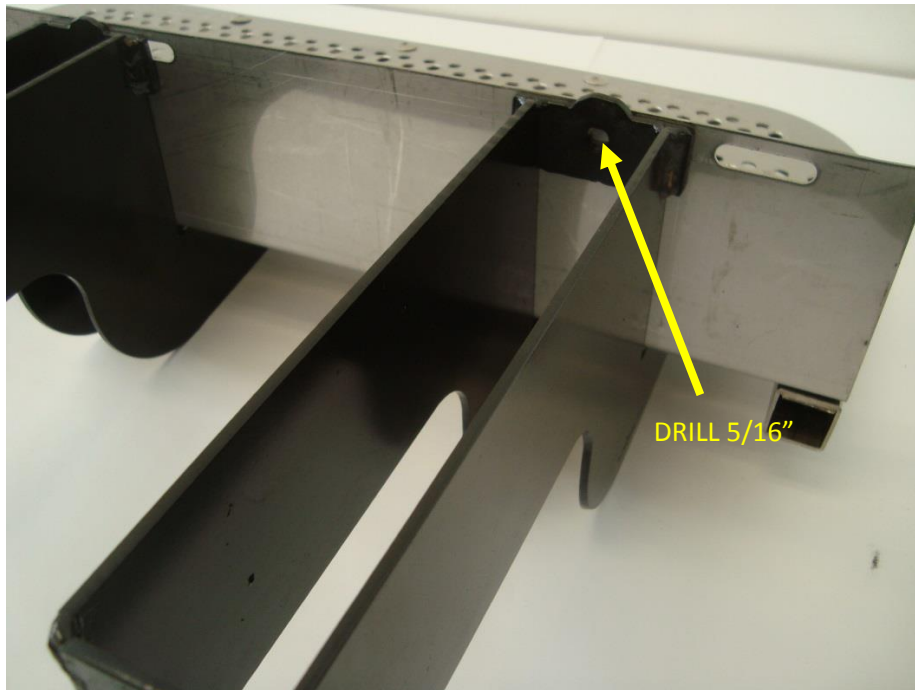
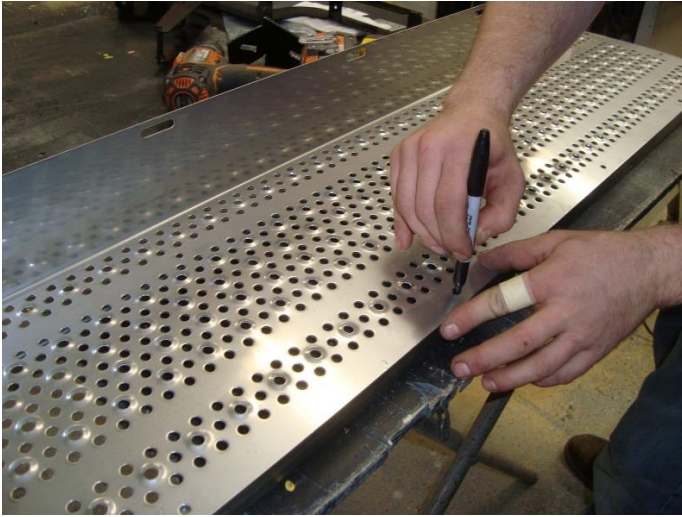
After aligning the Hoop to the Brackets mark the rivet holes for drilling with a 3/16" drill. These can now be riveted together.







Next the Running Board Platform drill locations can be marked using the Platform(s) as a template. Remove and drill with the same 3/16" drill then rivet together. Drill a 5/16" hole through the Platform at the rear Bracket

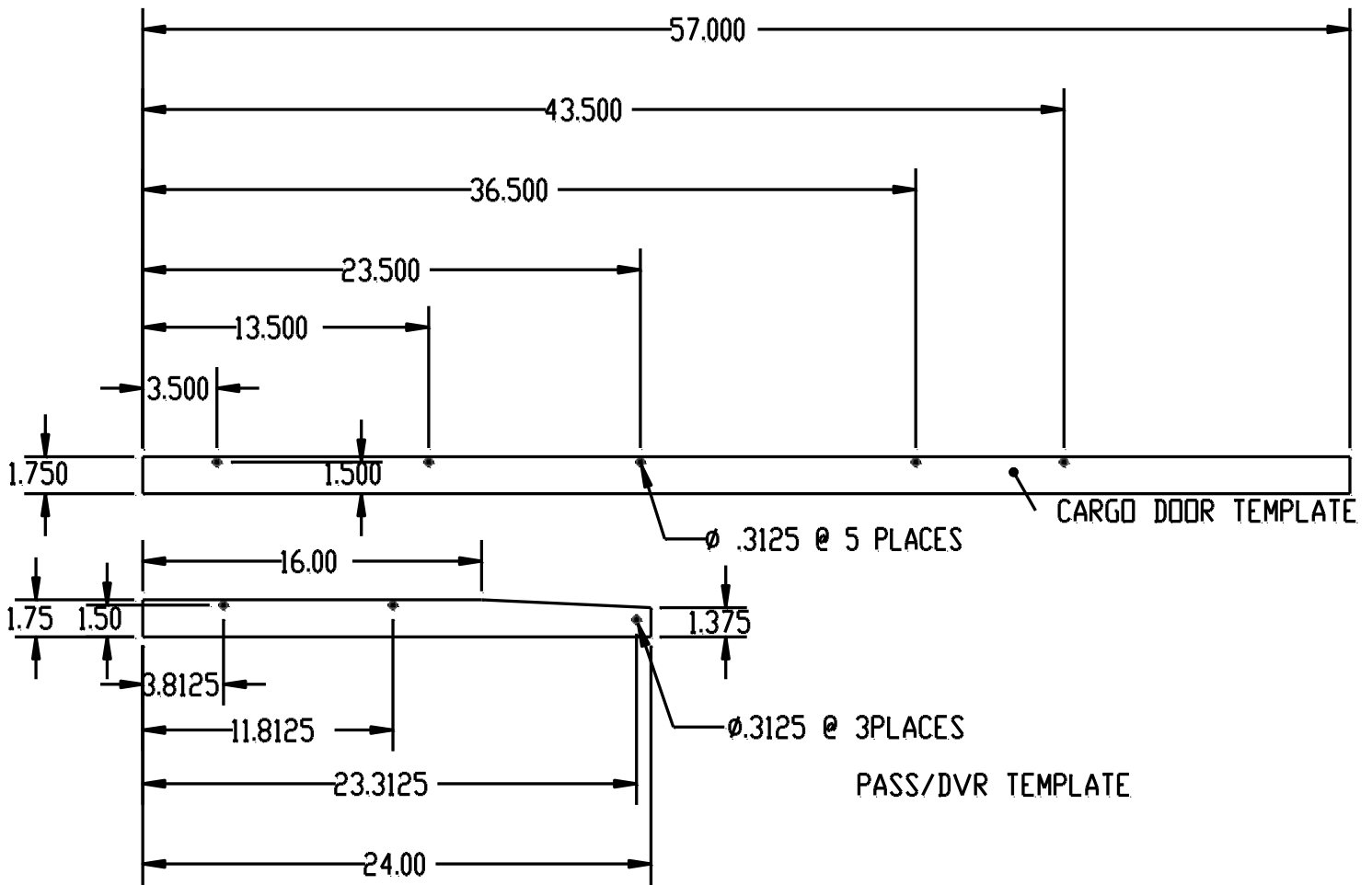




# Installation

**NOTE** – To ease marking these hole locations, a drill template may be made for use on either the Driver or Passenger side.

DRAWING UNITS ARE IN INCHES



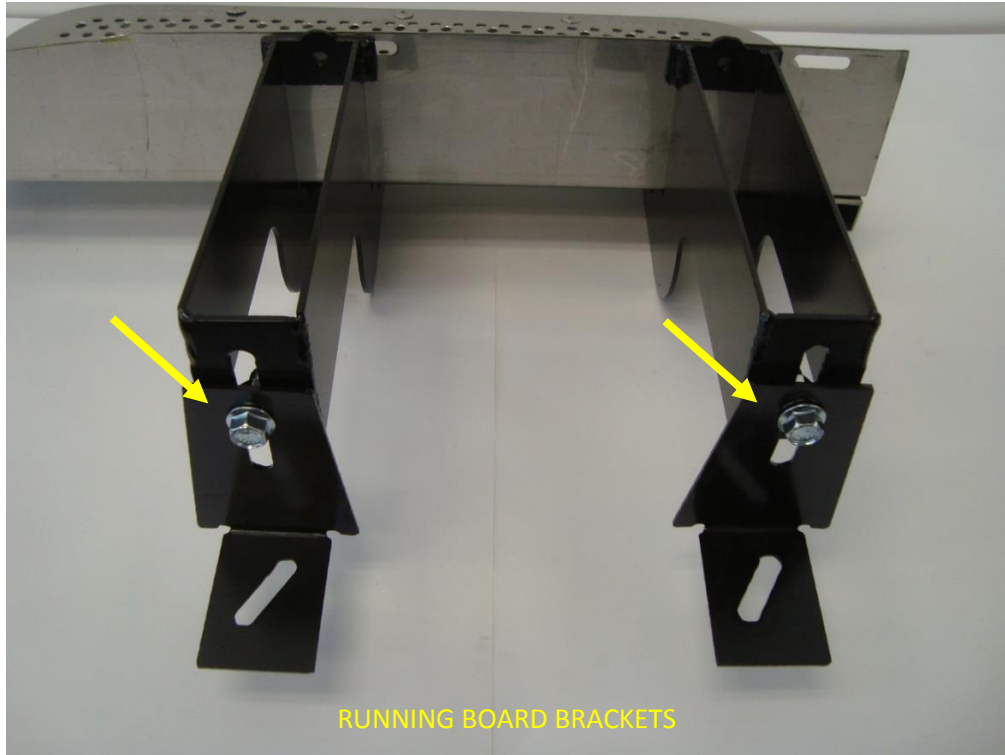


Align the Running Board assembly to the forward edge of the body pinch weld. **Notice that the assembly is placed behind the pinch weld.** Visually check to see if the running board is not tipped to the front or back. From the underside of the van mark the center slots of the Platform and drill the locations 5/16". Treat these holes with rust preventative. Install and tighten the 1/4-20" stainless hardware.





The Running Board Angle Brackets can now be bolted loosely to the Running Board Brackets.



From the underside of the van mark the center of the angled slots to be drilled  $9/16''$ . Install the supplied  $3/8-16''$  Rivet Nuts and Hex Head Flange bolts.





After the Passenger Running Board assembly is secured make a mark 10" from the back side of the Passenger Running Board. This mark is where the Cargo Door Running Board will start.





Follow the same procedure to install the Cargo Running Board. A straight edge should be used to True both together.

