

FENTON

InnovateElevate

26 Center St. Randolph NY, 14772

CAM LOCK

Installation and User Guide

THESE PRODUCTS ARE COVERED UNDER ONE OR MORE OF THE FOLLOWING US PATENT NUMBERS
9,550,436 / 9,610,861 / 10,625,867

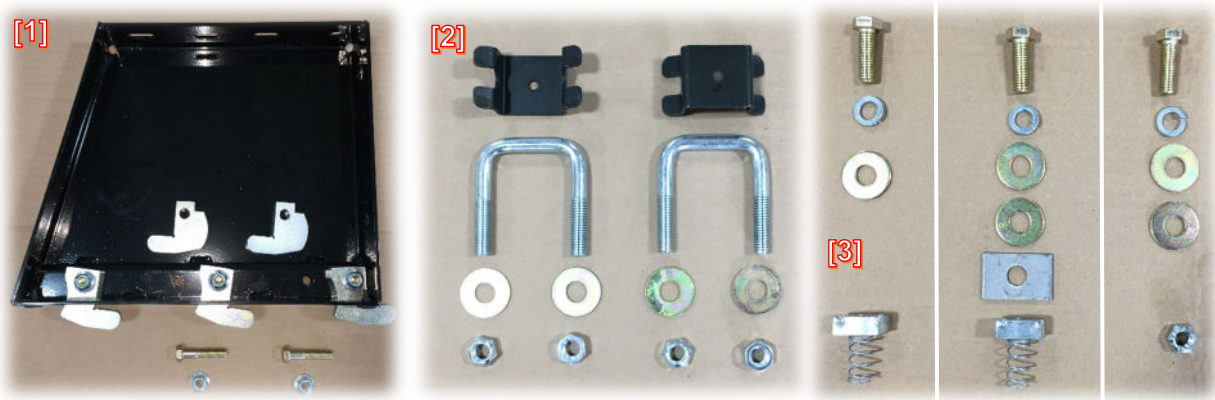
Table of Contents

RIGID SEATS	3
Tools and Materials Needed	3
Part Numbers and Kits	4
Freedman GoSeat & Go ES to CAMLock Base Installation	5
Freedman 3PT Seat to CAMLock Base Installation	6
CAMLock Base to AbiliTrax Floor Installation	7
FOLDAWAY SEATS	9
Tools and Materials Needed	9
Part Numbers and Kits	9
CAMLock Base to AbiliTrax Floor Installation	10

RIGID SEATS

Tools and Materials Needed

- Ratchet
- 9/16" socket
- 5/8" socket
- CAMLock hardware kit
- 3/4" stubby wrench
- 9/16" wrench



[1] Basic parts in every kit

[2] GO/GO ES seat hardware

[3] 3PT seat hardware.
Column 1 – Front
Column 2 – Back U-strut
Column 3 – Unused



InnovateElevate

26 Center St. Randolph NY, 14772

Part Numbers and Kits

Left- and Right-style legs can be interchanged at the customer's preference

Item	Specification	Style	Part Number
Leg		Left	CW0010
		Right	CW0001
CAM		Front	CP0050
		Rear	CP0060
Seat	Freedman GoSeat	Single Rigid (Left-hand belt)	74489LH-ABLTX
		Single Rigid (Right-hand belt)	74489RH-ABLTX
		Double Rigid (Left-hand belt)	74488LH-ABLTX
		Double Rigid (Right-hand belt)	74488RH-ABLTX
	Freedman Go ES	Single Rigid (Left-hand belt)	92623LH-ABTX*
		Single Rigid (Right-hand belt)	92623RH-ABTX*
		Double Rigid (Left-hand belt)	92585LH-ABTX*
		Double Rigid (Right-hand belt)	92585RH-ABTX*
	Freedman 3PT	Single Rigid	13496-ABLTX
		Double Rigid	25972-ABLTX
	Eleganza Trieste	Single Rigid	82847-ABLTX
		Double Rigid	82849-ABLTX

*Note that these part numbers do not have an 'L' in the suffix

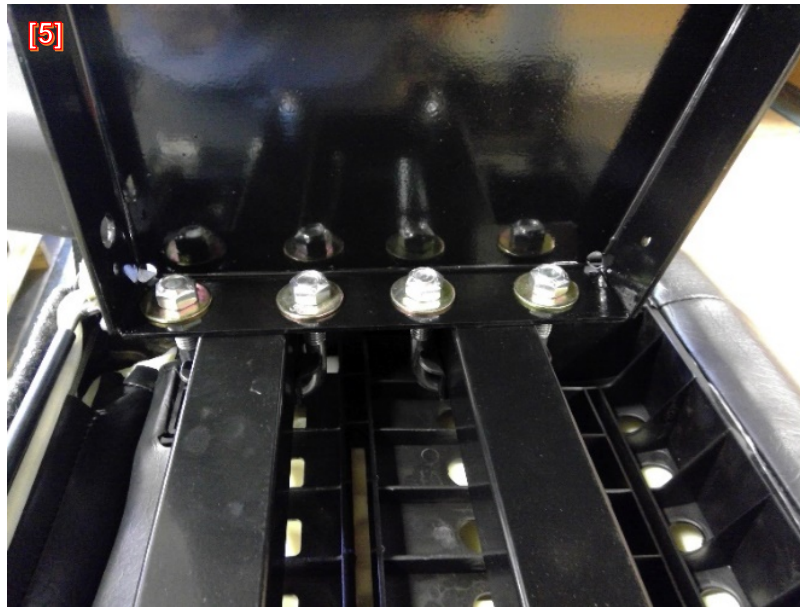
Freedman GoSeat & Go ES to CAMLock Base Installation

To install the CAMLock leg bases, first **ensure** that the proper part numbers are ordered from Freedman.

Freedman supplies special variations of their seats for AbiliTrax retro-fit, and can be identified by the suffix “-ABLTX” in their part



numbers. With this kit, **place** the black spacer pieces on top of the crossmembers, and then **wrap** the two U-bolts around both crossmembers, on top of the spacers [4]. Then, on each U-bolt, **place** a washer and lock-nut [5]. **Turn** the bolts, but do not tighten them down yet. Once the legs are on, **follow** the instructions in the last section *CAMLock Base to AbiliTrax*



Floor Installation to install the seat base. Finally, **tighten** the nuts on the U-bolts to secure the seat.

Freedman 3PT Seat to CAMLock Base Installation

To install the CAMLock leg bases, first **ensure** that the proper part numbers are ordered from Freedman. Freedman supplies special

variations of their seats for AbiliTrax retro-fit, and can be identified by the suffix “-ABLTX” in their part

numbers. With this kit, **place** the spring T-nuts inside the front crossmember

[6]. In the rear crossmember, **place** the plates

inside, then **place** the spring T-nut

inside the crossmember on top of the plate, lining up the holes. **Refer** to

hardware image [3]. **Put** the lock washer, then flat washer on a bolt, then

put the bolt through the front hole in the top of the seat leg/base, and

tighten it into a T-nut in the front crossmember. Next, **put** the lock washer,

then two flat washers on a bolt, then **put** the bolt through the rear hole in

the top of the seat leg/base, up through the plate, and **tighten** it into a T-

nut in the rear crossmember. **Repeat** for each leg.



CAMLock Base to AbiliTrax Floor Installation

For use with Fenton's AbiliTrax Floor System

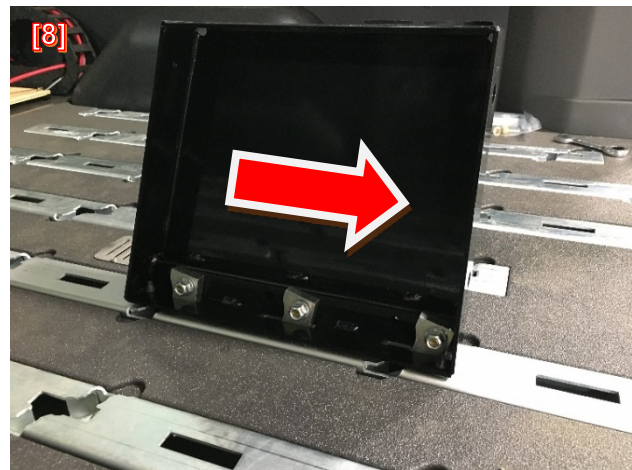
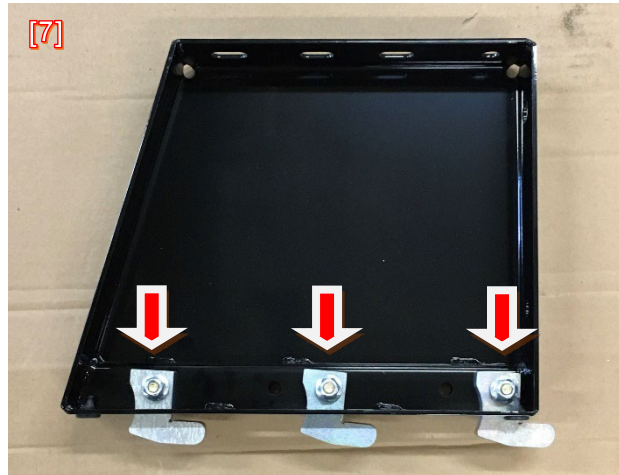
Install the rear-facing latch hooks to the seat base leg [7].

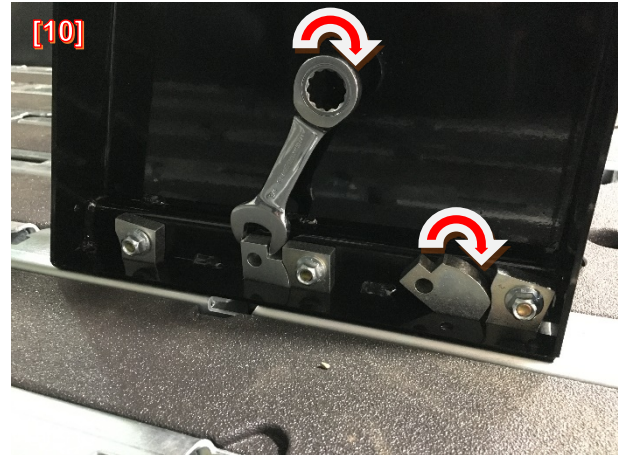
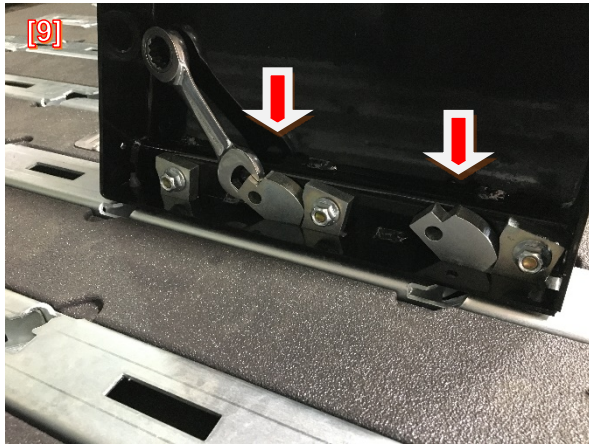
Lower the seat base onto the AbiliTrax rails such that the rear-facing Latch Hooks pass through the slots in the rail.

Slide the seat base backward until the Latch Hooks are fully engaged into track [8]. **Loosen** the hardware if the fit is especially tight.

Install forward-facing Lock Hooks into openings as shown [9]. **Rotate** the rear-facing Latch Hooks to get the fit. The Lock Hook holes will *not* align at this time.

Use a 3/4" wrench on the "Flats" at the top of the forward-facing Lock Hooks to **rotate** them 90 degrees and **set** the CAMs [10]. The seat base *must* be fully back in order to lock.





Continue to **rotate** the Lock Hooks until flat tops are flush with the flat tops on Latch Hooks.



NOTE — The tops of Latch Hooks and Lock Hooks should be flush and parallel.

Once all forward-facing Lock Hooks are fully rotated into position, **install** all remaining hardware and **torque** to 18 ft-lb **[11]**.

CAUTION – Seats **MUST ALWAYS** be locked into the AbiliTrax tracks and the Lock Hooks **MUST ALWAYS** be in the LOCKED POSITION and bolted in when a seat is in the vehicle. **NEVER** move a vehicle with a loose seat. **NEVER** attempt to occupy a seat which is **NOT** fully installed **AND** LOCKED in position. Occupied seats **MUST ALWAYS** be in the FORWARD-FACING POSITION.

FOLDAWAY SEATS

Tools and Materials Needed

- Hammer
- Pry bar
- CAMLock hardware kit
- 3/4" wrench

Qty. 10 - Latch hooks

Qty. 10 - Lock hooks

Qty. 10 - Lynch pins



Part Numbers and Kits

Item	Specification	Style	Part Number
CAM		Front	CP0050
		Rear	CP0060
Seat	Freedman Go ES	Double Foldaway (Curbside)	45467-ABLTX
		Double Foldaway (Streetside)	43705-ABLTX
	Freedman 3PT	Double Foldaway (Curbside)	26400-ABLTX
		Double Foldaway (Streetside)	26401-ABTLX
	Eleganza Trieste	Single Recliner	82841-ABTLX
		Double Recliner	82845-ABTLX

CAMLock Base to AbiliTrax Floor Installation

For use with Fenton's AbiliTrax Floor System

Pre-install the lower rear-facing latch hooks into the Freedman seat base **[13]**. **Lower** the seat into the track at the desired location **[14]**. **Verify** that the foldaway seat can fold and unfold unobstructed. Once the rear-facing latch hooks are in the floor, **place** the forward-facing lock hooks into the slots such that they are snug against the latch hooks. With a 3/4" stubby wrench, **grab** the lock hooks and **rotate** them to lock each CAM, one by one. As the system tightens up, it may be necessary to use a pry bar and mallet together to **pound** the CAMs into the locked position. When all the CAMs are locked in place and flush across the top, **insert** the lynch pins to secure each lock hook **[15]**.

